

10 Safety Rules of Construction Sites

Welcome to our presentation on the 10 essential safety rules that every construction site should follow. Learn how to prioritize safety and protect your team!





The Importance of Safety on Construction Sites

Construction sites can be hazardous environments. By prioritizing safety, we create a secure work environment that protects workers and minimizes risks.

Required Personal Protective Equipment



Rule 1: Personal Protective Equipment (PPE)

All workers and visitors must wear appropriate PPE, including hard hats, steel-toed boots, high-visibility vests, safety glasses, and hearing protection when necessary.

Safety First



Rule 2: Hazard Communication

Clearly label and store hazardous materials, and provide Material Safety Data Sheets (MSDS) for all chemicals on site. Workers should be trained to understand these labels and MSDSs.



Rule 3: Fall Protection

Implement fall protection measures, such as guardrails, safety nets, and personal fall arrest systems, when working at heights. Ensure all equipment is regularly inspected and properly maintained.

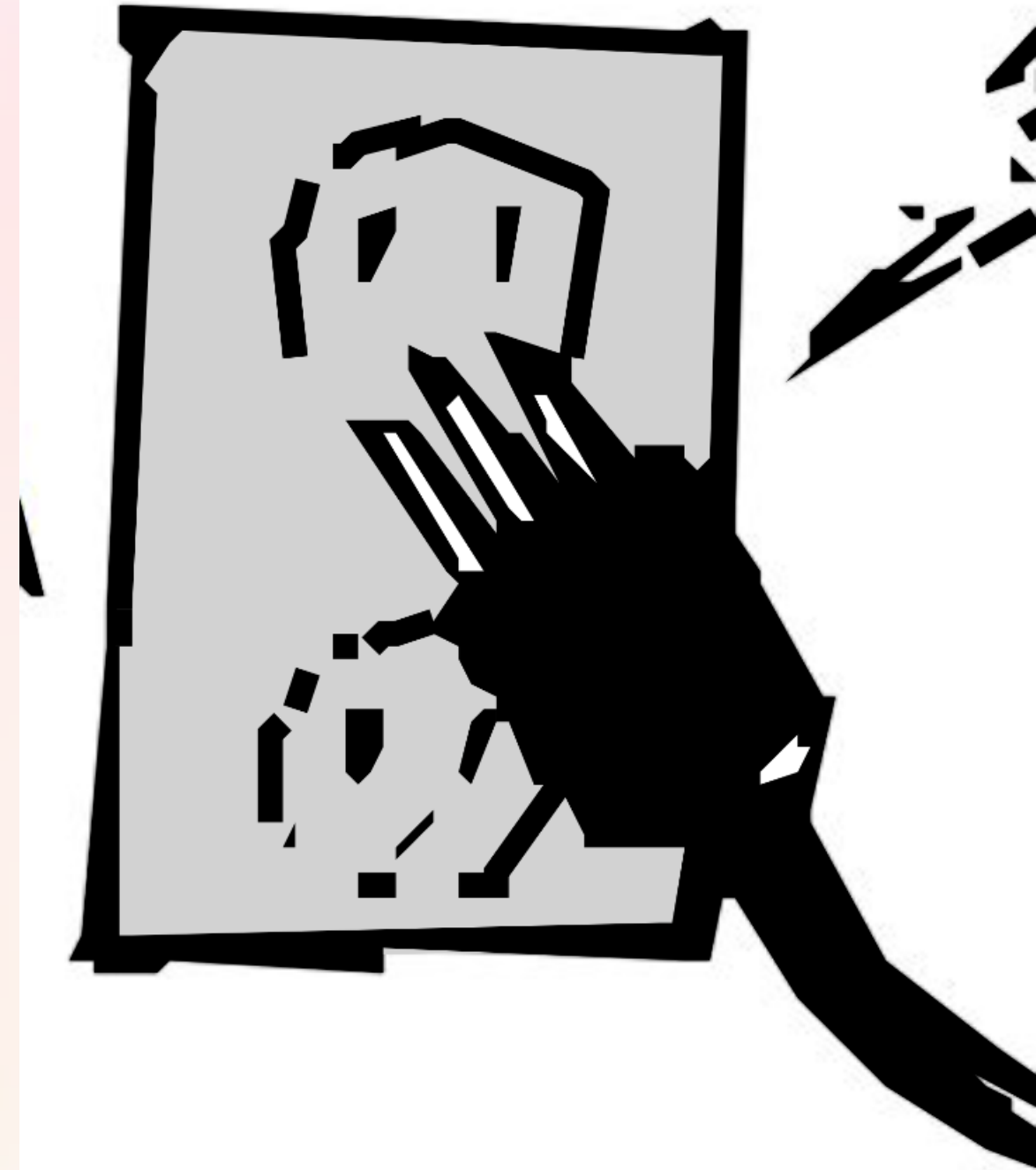


Rule 4: Scaffolding Safety

Inspect and maintain scaffolds regularly, and ensure they are erected and used according to safety standards. Workers should use fall protection when working on scaffolds at elevated heights.

Rule 5: Electrical Safety

Only qualified electricians should perform electrical work. All electrical equipment and wiring should be regularly inspected, and workers should be trained in electrical safety practices.



Rule 6: Heavy Machinery and Equipment Safety

Properly train and license workers operating heavy machinery and equipment. Ensure that equipment is maintained, and establish clear work zones for both machines and pedestrians.



Rule 7: Fire Safety

Maintain clear and accessible fire exits, provide fire extinguishers, and conduct fire drills. Store flammable materials in designated areas, away from ignition sources.



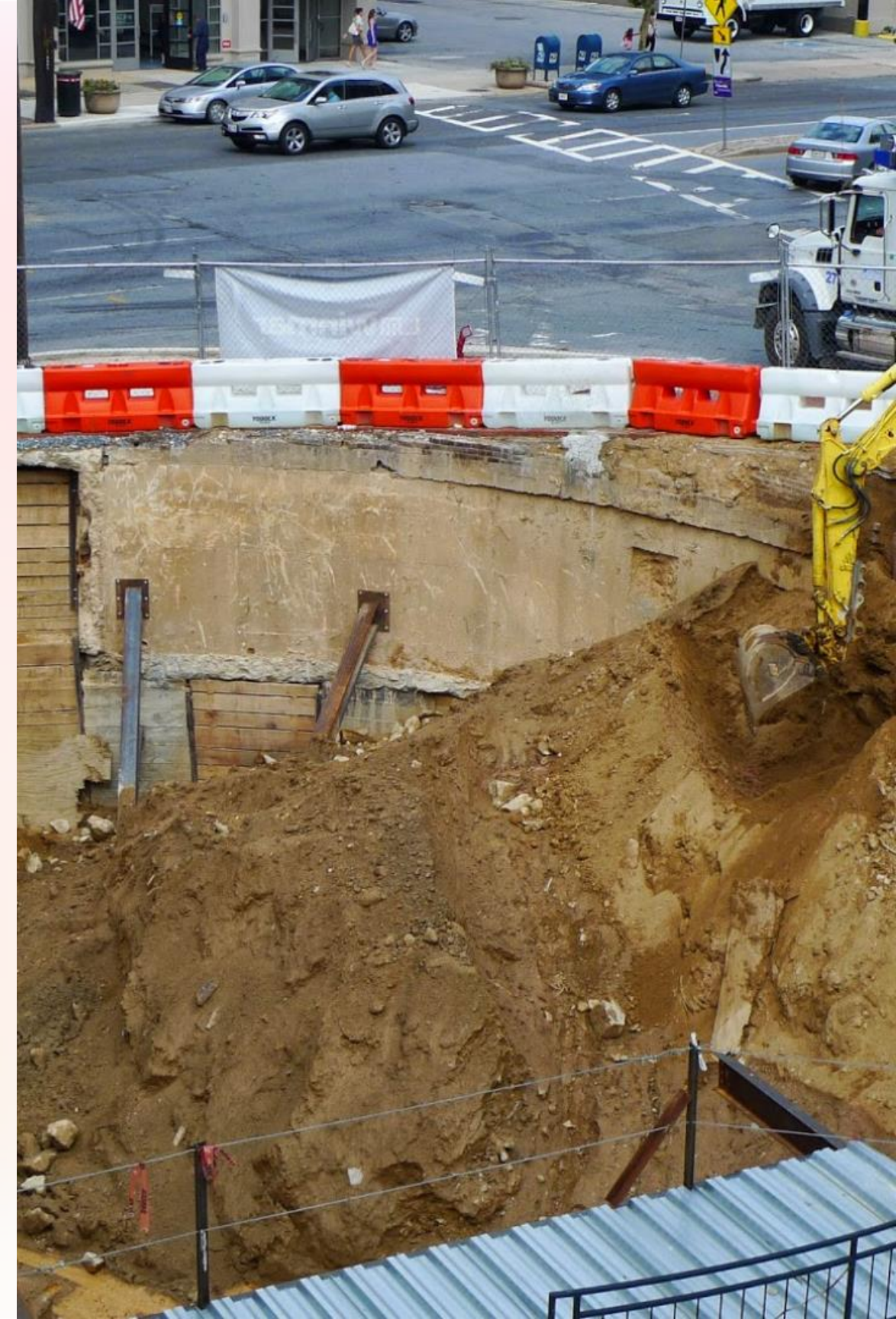


Rule 8: Tool Safety

Regularly inspect and maintain hand tools and power tools. Ensure workers are trained in their proper use and storage.

Rule 9: Excavation and Trench Safety

Before digging, conduct a thorough site analysis, and use proper shoring, sloping, or shielding to prevent cave-ins. Workers should not enter trenches that are not adequately protected.



Rule 10: Emergency Response

Establish and communicate emergency response procedures, including first aid stations and emergency contact information. Conduct regular drills to ensure all workers know how to respond to various types of emergencies.

